

ESTABLISHED 1988



QUEEN *Mary*

Tea Parties

WITH QUEEN MARY



2012 PRODUCT CATALOG

✧ EXPERIENCE ROYAL TEA.™ ✧



"QUEEN" MARY C. GREENGO

ABOUT THE QUEEN
"Queen" Mary Greengo started Queen Mary Tea in 1988. She wanted to provide a place where people of all ages could get high-quality tea and food in the traditional manner of English tea parties. "I want people to feel warm and welcomed here, not stuffy," she said. "I want them to feel like they are coming into my home." Customers have long been requested that she open another Queen Mary Tea Room elsewhere. Then came the idea of having women do their own Queen Mary Tea Parties at home.

QUEEN MARY TEA ROOM is the oldest independent tea room in America and is featured in Bruce Richardson's book, *The Great Tea Rooms of America*. Richardson says, "If you want to feel like a queen, this is the place to go." CNN Travel listed Queen Mary's as one of the five great American tea rooms.

Queen Mary's offers a unique tea experience that has attracted tea lovers from all over the world. Reviewers say, "Best tea place in the world," and "Queen Mary Tea Room is a must experience" and "a tradition since my college days." Tea lovers revel in the traditional British afternoon tea rituals.





CONTENTS

ABOUT TEA	5
BLACK TEA	6
FLAVORED BLACK TEA	8
OOLONG TEA	10
ASIAN TEAPOTS	11
GREEN TEA	12
WHITE TEA	14
TULSI TEA	15
ROOIBOS & HONEYBUSH	16
INFUSER TEAPOTS	18
TEA KETTLES	20
TEA ON THE GO	21
AFTERNOON TEA ACCESSORIES	22
AFTERNOON TEA FARE	24
TINY TEAPOT JEWELRY	26
REVERSIBLE APRONS	28
ALICE IN WONDERLAND	30
FAIRY PRINCESS PARTIES	31
BECOMING A TEA QUEEN	32
FUND RAISING TEA PARTIES	34



S

HARE YOUR LOVE OF TEA
WITH FRIENDS

EXPERIENCE ROYAL TEA.™



ABOUT TEA

All tea comes from the same bush—the *Camellia Sinensis*—similar to the camellias that flourish in our own gardens. The tea camellia is native to China, although a second sub-species was discovered in the northern India in the late 1800s. The tea bush blooms with small white or pink flowers.



The main differences between teas — black, oolong, green and white—stems from the way the tea is processed. Subtle differences come from the climate, soil and growing practices.



Queen Mary Selected
White Peony Tea Leaves



BLACK TEA
Black teas are fully oxidized, meaning that once the leaves are picked and allowed to soften, they are rolled or crushed. This breaks the fibers and releases the juices within the leaves to react to oxygen, turning the leaves from green to a coppery red. Leaves are then baked or “fired” to dry completely for packing, storing and shipping.

Examples include the rich Yunnan and the slightly smoky Keemun from China; Darjeeling and malty Assam from India; and the lighter, “fruity-biscuity” Ceylon from Sri Lanka.

THE QUEEN'S RULES

BREWING BLACK TEA

1. Bring freshly drawn water to a boil.
2. Pour water over tea. Use 1 to 2 teaspoons for each 8 ounces of pure water.
3. Allow tea to steep for 3 to 4 minutes. (Longer steeping will cause tea to become bitter.)

HEALTH BENEFITS

- Reduces risk of stroke.
- Promotes healthy teeth.
- Helps prevent diabetes.
- Helps lower cholesterol.

QUEEN MARY TEA POT
The Queen Mary stainless steel teapot is a beautiful teapot constructed of hotel and restaurant grade 18/10 stainless steel. This elegant teapot is insulated and proudly made in the USA.

Our teapot holds 30 ounces and features the Queen Mary logo engraved on the sides. Yes, it's the same one we use in our afternoon tea service in the tearoom.



QUEEN MARY
STAINLESS STEEL TEAPOT
200.

BLACK TEAS



ASSAM
Velvety smooth and luxurious. The scent is reminiscent of freshly baked bread and tastes delightfully sweet and malty.

Tin... 15.⁰⁰ 4 oz... 21.⁴⁴
8 oz... 38.⁹⁹ 16 oz... 69.⁴⁶



CAMERONIAN
A smooth, fruity, full flavor. From a Malaysian plantation owned by the original British family since before WW II.

Tin... 12.⁰⁰ 4 oz... 15.⁵³
8 oz... 27.⁹⁶ 16 oz... 50.³²



CEYLON
This tea is deliciously aromatic with a medium body and well balanced. Perfect for morning or afternoon.

Tin... 12.⁰⁰ 4 oz... 15.¹³
8 oz... 27.²³ 16 oz... 49.⁰¹



DARJEELING
The "Champagne of Teas." A high altitude, second flush tea from small gardens in the foothills of the Himalayas.

Tin... 14.⁰⁰ 4 oz... 21.⁰⁰
8 oz... 37.⁸⁰ 16 oz... 68.⁰⁴



ENGLISH BREAKFAST
This Queen Mary blend combines teas of India, Sri Lanka and China. Robust and loves milk and sweetener.

Tin... 13.⁰⁰ 4 oz... 15.³⁵
8 oz... 27.⁶³ 16 oz... 49.⁷³



GOLDEN MONKEY
A gold tipped tea from the Fujian province of China. Full bodied with honey sweetness and a rich caramel finish.

Tin... 16.⁰⁰ 4 oz... 20.⁰⁰
8 oz... 36.⁰⁰ 16 oz... 64.⁸⁰



IRISH BREAKFAST
This Irish blend combines golden tipped Assam and high grown Ceylon teas. Great any time of the day.

Tin... 12.⁰⁰ 4 oz... 12.³⁸
8 oz... 22.²⁸ 16 oz... 40.¹⁰



LAPSANG SOUCHONG
A favored tea of the fictional detective, Sherlock Holmes. A distinct campfire aroma with an assertive character.

Tin... 12.⁰⁰ 4 oz... 14.⁰⁰
8 oz... 25.²⁰ 16 oz... 45.³⁶



NILGIRI
A smooth, mellow tea from South India. Rich, with a slight woody and fruity flavor. A classic and elegant tea.

Tin... 12.⁰⁰ 4 oz... 16.⁶³
8 oz... 29.⁹³ 16 oz... 53.⁸⁷



PU-ERH
This aged tea has a woody, earthy aroma like an old growth forest. Exudes mystery with its rich, velvety texture.

Tin... 15.⁰⁰ 4 oz... 16.⁰⁰
8 oz... 28.⁸⁰ 16 oz... 51.⁸⁴



RUSSIAN CARAVAN
Chinese lychee tea imparts a wonderful fruitiness. Lapsang Souchong adds a smokey touch to this delicious blend.

Tin... 12.⁰⁰ 4 oz... 13.⁵⁰
8 oz... 24.³⁰ 16 oz... 43.⁷⁴



YUNNAN GOLD
A sweet, earthy quality and rich depth of character mark exquisite tea. Perfect for adventurous coffee drinkers.

Tin... 15.⁰⁰ 4 oz... 23.⁴⁰
8 oz... 42.¹² 16 oz... 75.⁸²



FLAVORED BLACK TEA
 Flavored black teas are perhaps the most popular teas in America. Earl Grey is a universal favorite. This black tea is infused with bergamot, a Spanish citrus fruit. Earl Grey blends are all unique—every producer creates their own.

Other popular flavored black teas include Almond Cream, Orange Spice, Coconut, Jackfruit, Creamy Earl Grey and Strawberry Pepper, just to name a few. Each of these teas is either infused with essential oils and/or mixed with fruit or spice blends.

HISTORY OF AFTERNOON TEA

Anna, the 7th Duchess of Bedford, is often credited with the invention of the afternoon tea tradition in the early 1840's. At the time, dinner was not served until 8:30 or 9:00 in the evening and the Duchess often became hungry. She ordered a small meal of bread, butter and other niceties, such as cakes, tarts and biscuits, to be brought secretly to her boudoir. Her habit caught on and the concept of a small meal with tea became popular and eventually known as "Afternoon Tea."

THE QUEEN'S RULES

BREWING FLAVORED BLACK TEA

1. Bring freshly drawn water to a boil.
2. Pour water over tea. Use 1 to 2 teaspoons for each 8 ounces of purified water.
3. Allow tea to steep for 3 to 4 minutes. (Longer steeping will cause tea to become bitter.)

HEALTH BENEFITS

- Reduces risk of stroke.
- Promotes healthy teeth.
- Helps prevent diabetes.
- Helps lower cholesterol.



ALMOND CREAM

Real pieces of almond make this a decadent tea. A fragrant nutty flavor blends well with the velvet of added cream.

Tin... 12.⁰⁰ 4 oz... 14.¹²
 8 oz... 25.⁴¹ 16 oz... 45.⁷³



BLACK CURRANT

Currant's unique taste highlight this rich aromatic infusion that yields a cup with a lingering sweetness.

Tin... 12.⁰⁰ 4 oz... 14.⁶³
 8 oz... 26.³³ 16 oz... 47.³⁹



CHOCOLATE TANGO

Bask in warmth on a chilly day sipping this delicious chocolately black tea with toasted mate and rooibos.

Tin... 13.⁰⁰ 4 oz... 15.⁷⁵
 8 oz... 28.³⁵ 16 oz... 51.⁰³



COCONUT

One sip and the exotic nuance of coconut in this exquisite China black tea will transport you to a tropical paradise.

Tin... 13.⁰⁰ 4 oz... 15.⁷⁵
 8 oz... 28.³⁵ 16 oz... 51.⁰³

FLAVORED BLACK TEAS (CONTINUED)



CREAMY EARL GREY
The heavenly flavor of our Earl Grey with a delicious touch of vanilla and cream. A smooth, aromatic blend.

Tin. . . 12.⁰⁰ 4 oz . . . 14.²⁵
8 oz . . 25.⁶⁵ 16 oz . . 46.¹⁷



EARL GREY
The hallmark of Earl Grey tea is the exotic scent of bergamot, an oil extracted from the rind of the Seville orange tree.

Tin. . . 12.⁰⁰ 4 oz . . . 14.²⁵
8 oz . . 25.⁶⁵ 16 oz . . 46.¹⁷



FRENCH VANILLA
We love the smell of cookie dough right after the vanilla has been added. This is a calorie free version!

Tin. . . 12.⁰⁰ 4 oz . . . 15.⁷⁵
8 oz . . 28.³⁵ 16 oz . . 51.⁰³



JACKFRUIT
The jackfruit is the largest tree borne fruit in the world. The exotic flavor of mango, papaya, banana and guava.

Tin. . . 13.⁰⁰ 4 oz . . . 15.²⁶
8 oz . . 27.⁴⁷ 16 oz . . 49.⁴⁵



LADY EARL GREY
Orange and lemon peel with the oil of bergamot—for an elegant and refreshing citrus palette.

Tin. . . 12.⁰⁰ 4 oz . . . 13.⁵⁰
8 oz . . 24.³⁰ 16 oz . . 43.⁷⁴



LAVENDER EARL GREY
We blend our classic Earl Grey with organic lavender from Sequim, Washington to create this relaxing cup.

Tin. . . 12.⁰⁰ 4 oz . . . 17.⁴⁷
8 oz . . 31.⁴⁴ 16 oz . . 56.⁶⁰



MANGO PASSION FRUIT
Mango is a sultry and delicious tropical fruit. We combined it with the floral essence of passion fruit.

Tin. . . 13.⁰⁰ 4 oz . . . 15.⁷⁷
8 oz . . 28.³⁸ 16 oz . . 51.⁰⁹



MASALA CHAI
Organic vanilla, ginger, clove, cardamom, cinnamon and a touch of black pepper harmonize with black tea.

Tin. . . 14.⁰⁰ 4 oz . . . 13.¹³
8 oz . . 23.⁶³ 16 oz . . 42.⁵³



ORANGE SPICE
Succulent orange slices, tart apple pieces, cardamom pods, coriander, pink peppercorn, clove and cinnamon.

Tin. . . 13.⁰⁰ 4 oz . . . 11.²⁵
8 oz . . 20.²⁵ 16 oz . . 36.⁴⁵



QUEEN'S EARL GREY
We created this tea in honor of Queen Elizabeth's Diamond Jubilee. It blends the best of all of our Earl Grey teas.

Tin. . . 13.⁰⁰ 4 oz . . . 14.⁹⁶
8 oz . . 26.⁹³ 16 oz . . 48.⁴⁸



ROYAL ROSE
Premium black tea with the delicate nuances of rose. The resulting infusion is rich, romantic and subtly floral.

Tin. . . 13.⁰⁰ 4 oz . . . 14.⁰⁰
8 oz . . 25.²⁰ 16 oz . . 45.³⁶



STRAWBERRY PEPPER
Real strawberries get a wonderfully spicy character by whole red peppercorns. An adventurous pairing.

Tin. . . 15.⁰⁰ 4 oz . . . 14.⁷¹
8 oz . . 26.⁴⁷ 16 oz . . 47.⁶⁵



OOLONG TEA

Oolong means “black dragon” in Chinese. These teas are partially oxidized with different degrees of oxidation yielding different flavors.

After picking, the leaves are shaken in baskets to bruise and oxidize only the edges of the leaves, leaving the inner part of the leaf green and intact. They are left as whole leaves, then rolled into a ball-like shape and fired to dry.

Oolong teas are generally grown in Taiwan and the Fujian province of eastern China. Many unique oolong varieties have been created, including the deliciously refreshing coconut Baozhong, the high-mountain Wenshan Baozhong and the pungent and woody Ti Guan Yin (also known as the Iron Goddess of Mercy).

THE QUEEN'S RULES



BREWING OOLONG TEA

1. Heat freshly drawn water to steaming—about 180°.
2. Pour heated water over tea leaves. Use 1 teaspoon of tea for each 6 to 8 ounces of water.
3. Allow tea to steep for 2 to 3 minutes. (Longer steeping will cause the tea to become bitter.)

HEALTH BENEFITS

- Boosts metabolism to burn fat.
- Blocks fat-building enzymes.
- Helps lower risk of cancer.
- Protects against heart disease.

OOLONG TEAS



COCONUT BAOZHONG

Extraordinarily smooth, creamy and slightly fruity. The flavor of coconut and Baozhong are a perfect combo.

Tin . . . 15.⁰⁰ 4 oz . . . 24.⁰⁰
8 oz . . . 43.²⁰ 16 oz . . . 77.⁷⁶



OSMANTHUS OOLONG

A light, bright sweet-flavored oolong with a fruity, floral aroma with hints of apples and apricots.

Tin . . . 15.⁰⁰ 4 oz . . . 15.⁰⁰
8 oz . . . 27.⁰⁰ 16 oz . . . 48.⁶⁰



TI GUAN YIN

The most famous oolong, also known as Iron Goddess of Mercy, has a smooth body and sweet finish. Fit for a Goddess.

Tin . . . 25.⁰⁰ 4 oz . . . 24.⁰⁰
8 oz . . . 43.²⁰ 16 oz . . . 77.⁷⁶



WENSHAN BAOZHONG

From the remote mountains of Taiwan. This exquisite teas has a buttery flavor and fresh, floral aroma.

Tin . . . 13.⁰⁰ 4 oz . . . 33.⁷⁵
8 oz . . . 60.⁷⁵ 16 oz . . . 109.³⁵

T

ETSUBIN TEAPOTS

Tetsubin teapots are Japanese cast iron pots that have a pouring spout and handle crossing over the top.

Our authentic Japanese cast iron teapots are fully enameled on the inside and will keep your tea hot for close to one hour.

They come in black, green and purple. Each has an infuser for easy brewing.



PURPLE TETSUBIN TEAPOT
116.



BLACK TETSUBIN
TEAPOT
106.



GOLDFISH TETSUBIN
TEAPOT
116.



GREEN TETSUBIN
TEAPOT
106.

Y

IXING TEAPOTS

With continued use, the clay of a YiXing (pronounced ee-shing) teapot will absorb the flavors of your tea, becoming more seasoned with each use. Over time, the color, flavor and aroma of your tea will develop a richness that is unique to each teapot. For this reason, it is tradition to dedicate a specific flavor or type of tea to each YiXing teapot.



YIXING TEAPOT WITH 2 CUPS
60.



CHERRY BLOSSOM
YIXING TEAPOT
WITH 2 CUPS
53.



FROG YIXING TEAPOT
50.



CAT YIXING TEAPOT
50.



GREEN TEA

The two main types of green tea include the nutty, pan-fried style from China, and the vegetal, steamed style from Japan.

Chinese greens include the classic Dragonwell and fragrant Jasmine pearls among hundreds of others.

Japanese greens include the popular Sencha (slightly spinachy) and Genmaicha (tea with roasted and popped rice).

THE QUEEN'S RULES

BREWING GREEN TEA

1. Heat freshly drawn water to steaming—about 180°.
2. Pour heated water over tea leaves. Use 1 teaspoon of tea for each 6 to 8 ounces of pure water.
3. Allow tea to steep for 2 to 3 minutes. (Longer steeping will cause the tea to become bitter.)

HEALTH BENEFITS

- Lowers risk of various cancers.
- Lowers cholesterol and burns fat.
- Helps keep arteries from clogging.
- Helps to stave off dementia.
- Helps prevent diabetes.

LUYU TEAMASTER

The LuYu Teamaster three-in-one brewing system was designed to create the perfect cup of tea without fuss. Place loose tea and hot water in the top strainer. No need to set a timer or count the minutes. The tea infuses the proper length of time. A small hole in the bottom of the strainer controls the timing. Best for white and green teas.

The LuYu comes in white and hand-painted blue and white porcelain.



BLUE LUYU TEAMASTER
45.



WHITE LUYU
TEAMASTER
40.

GREEN TEAS



CHERRY MARZIPAN
Sencha and mate infuse with the flavors of ripe cherries and marzipan create the perfect afternoon pick-me-up.

Tin... 12.⁰⁰ 4 oz... 15.⁰³
8 oz... 27.⁰⁶ 16 oz... 48.⁷¹



CITRUS MARIGOLD
A sweet, refreshing blend of Chinese green tea, orange peels and marigold flowers, with orange and lemon notes.

Tin... 11.⁰⁰ 4 oz... 13.²⁰
8 oz... 23.⁷⁶ 16 oz... 42.⁷⁷



DRAGONWELL
Sweet, rounded flavor, reminiscent of freshly roasted white corn. Full, nutty and buttery with delicious finish.

Tin... 15.⁰⁰ 4 oz... 18.¹³
8 oz... 32.⁶³ 16 oz... 58.⁷³



GENMAICHA
Sencha tea and toasted rice produce a delicious, nutty green tea. A Japanese favorite. Also called popcorn tea.

Tin... 13.⁰⁰ 4 oz... 14.⁰⁶
8 oz... 25.³¹ 16 oz... 45.⁵⁶



JASMINE PEARL
Each leaf bud is hand plucked and rolled, and then scented at least five times with night blooming jasmine flowers.

Tin... 24.⁰⁰ 4 oz... 24.⁷⁵
8 oz... 44.⁵⁵ 16 oz... 80.¹⁹



POMEGRANATE STRAWBERRY GRAPE
Pomegranate blends perfectly with strawberry and grapes. Awaken your senses.

Tin... 13.⁰⁰ 4 oz... 14.³³
8 oz... 25.⁷⁹ 16 oz... 46.⁴¹



YANG XIAN MAO FENG
This legendary tea became an imperial tribute tea during the Song Dynasty. Treasure its refreshing taste and aroma.

Tin... 14.⁰⁰ 4 oz... 22.⁵⁰
8 oz... 40.⁵⁰ 16 oz... 72.⁹⁰

“All true tea lovers not only like their tea strong, but like it a little stronger with each year that passes.”

*~George Orwell
A Nice Cup of Tea*





WHITE TEA

White tea is the least processed of all teas. It is typically comprised of the newly formed tea leaf buds that are plucked by hand and then simply wilted and dried.

This tea is known for its delicate, slightly nutty taste. The finest example is called *Yinzhen*, or Silver Needles, referring to the long shape of the downy buds. Also popular is White Peony (also called *Pai Mu Dan*) which is a beautiful full-leafed tea with a delightfully sweet finish. Our flavored whites are delicate and delicious.

THE QUEEN'S RULES

BREWING WHITE TEA

1. Bring freshly drawn water to steaming, about 170°.
2. Use 1 tablespoon of tea for each 6 to 8 ounces of pure water.
3. Pour water over tea leaves. Allow tea to steep for 2 to 3 minutes. (Over-steeping will make the tea bitter.) Enjoy this lovely tea for several infusions.

HEALTH BENEFITS

- Prevents fat cells from forming.
- Fights signs of aging.
- Protects against various cancers.
- Helps to stave off dementia.

WHITE TEAS



SILVER NEEDLE WHITE

Each bud is plucked the moment it is fully developed but before it opens. Delicate sweetness and fragrance.

Tin . . . 12.⁰⁰ 4 oz . . . 29.⁹³
8 oz . . . 53.⁸⁷ 16 oz . . . 96.⁹⁶



WHITE PEACH BLOSSOM

Natural essences of succulent peach and tangerine. Jasmine and osmanthus flowers provide a sweet floral touch.

Tin . . . 12.⁰⁰ 4 oz . . . 27.⁰⁰
8 oz . . . 48.⁶⁰ 16 oz . . . 87.⁴⁸



WHITE PEONY

One downy bud and three leaves lightly steeped create a smooth cup with a sweet nutty finish.

Tin . . . 10.⁰⁰ 4 oz . . . 34.²⁰
8 oz . . . 61.⁵⁶ 16 oz . . . 110.⁸¹



WILD STRAWBERRY

Aromatic tea combining white tea with the sweetness of summer strawberries and apples. A true flavor treat.

Tin . . . 12.⁰⁰ 4 oz . . . 29.⁹³
8 oz . . . 53.⁸⁷ 16 oz . . . 96.⁹⁶



TULSI TEA

Also known as Holy Basil and “The Queen of Herbs,” this caffeine-free herbal infusion is sacred in India. Although it sounds familiar, Holy Basil is not related to the pesto variety of basil.

Tulsi has been revered in India for over five thousand years for its healing properties for the body, mind and spirit. Tulsi is renowned for relieving stress, bolstering the immune system, enhancing stamina, combatting colds and promoting a healthy metabolism—just to name a few. And to top off all its health benefits, it is also delicious!

THE QUEEN’S RULES

BREWING TULSI TEA

1. Bring freshly drawn water to steaming, about 190°.
2. Pour water over Tulsi. Use 2 teaspoons for each 6 to 8 ounces of pure water.
3. Allow to steep for 7 to 10 minutes. If a longer time is allowed, the brew will not become bitter, only more flavorful.

HEALTH BENEFITS

- Supports the immune system.
- Combats cold and flu symptoms.
- Helps to sharpen memory.
- Helps lower cholesterol.
- Reduces stress symptoms.

TULSI TEAS



MINT TULSI

Produces a cup that is fragrant and refreshing. Cooling spearmint taste with a wonderful lingering aftertaste.

Tin . . . 11.⁰⁰ 4 oz . . . 20.⁰⁰
8 oz . . 36.⁰⁰ 16 oz . . 64.⁸⁰



ORANGE FENNEL TULSI

A delicious blend of green leaf tulsi, fennel seeds and orange peel. Calming and mellow with a sweet aftertaste.

Tin . . . 12.⁰⁰ 4 oz . . . 20.⁰⁰
8 oz . . 36.⁰⁰ 16 oz . . 64.⁸⁰



TULSI

Also known as Holy Basil, this healthy infusion is delicious, fragrant and has a flirtatious hint of sweet clove.

Tin . . . 12.⁰⁰ 4 oz . . . 18.¹⁵
8 oz . . 32.⁶⁷ 16 oz . . 58.⁸¹

“There are few hours in life more agreeable than the hour dedicated to the ceremony known as afternoon tea.”

~Henry James
The Portrait of a Lady



THE QUEEN'S RULES

BREWING ROOIBOS & HONEYBUSH

1. Bring freshly drawn water to a boil.
2. Pour water over rooibos. Use 1 teaspoon for each 6 to 8 ounces of pure water.
3. Allow to steep up to 10 minutes. (Longer steeping increases flavor not bitterness.)

HEALTH BENEFITS

- Improves cardiovascular health.
- Supports and improves liver health.
- Supports immune system.
- Combats brain aging.

ROOIBOS & HONEYBUSH
 Rooibos (*roy-boss*) and its close relative, Honeybush, are caffeine free herbal infusions from South Africa.

These have full-bodied, nutty flavor that combine well with a variety of flavors. Both are naturally caffeine free and filled with health benefits.

ROOIBOS AND HONEYBUSH HERBAL INFUSIONS



CHAI

Cinnamon, spearmint, cloves and cardamom harmonize for an enchanting cup of tea. Perfect with a splash of milk.

Tin... 12.⁰⁰ 4 oz ... 11.²⁵
 8 oz... 20.²⁵ 16 oz ... 36.⁴⁵



CHAMOMILE CITRUS MINT

A calming blend of mint, chamomile, orange blossom, lemon grass and citrus peel.

Tin... 11.⁰⁰ 4 oz ... 13.³⁶
 8 oz... 25.¹⁴ 16 oz ... 44.⁰⁰



CHOCOLATE PEPPERMINT

Chocolatey flavor reminiscent of an after dinner mint with rooibos and peppermint.

Tin... 12.⁰⁰ 4 oz ... 14.⁴⁴
 8 oz... 25.⁹⁹ 16 oz ... 46.⁷⁸



EARL GREY

The traditional flavor of Earl Grey dances in perfect unison with the warmth of rooibos in this delicious fusion.

Tin... 12.⁰⁰ 4 oz ... 14.⁰⁶
 8 oz... 25.³¹ 16 oz ... 45.⁵⁶



GINGER LIME

Our organic green rooibos combines zesty citrus flavor with notes of ginger and rare spices.

Tin... 12.⁰⁰ 4 oz ... 12.⁰⁰
 8 oz... 21.⁶⁰ 16 oz ... 38.⁸⁸



HARVEST PEAR

A bouquet of tantalizing aroma and flavor. Real pieces of pear and apple create this sensational blend.

Tin... 13.⁰⁰ 4 oz ... 12.²⁷
 8 oz... 22.⁰⁹ 16 oz ... 39.⁷⁷



HAZELNUT HONEYBUSH

Heavenly toasted hazelnut mixes deliciously with our honeybush. A delicious day or nighttime treat.

Tin... 12.⁰⁰ 4 oz ... 12.³⁸
 8 oz... 22.²⁸ 16 oz ... 40.¹⁰



HONEYBUSH

A delicious relative of rooibos. Rich in antioxidants and naturally caffeine-free. A woody and aromatic cup.

Tin... 12.⁰⁰ 4 oz ... 11.⁶⁰
 8 oz... 20.⁸⁸ 16 oz ... 37.⁵⁹

ROOIBOS AND HONEYBUSH HERBAL INFUSIONS (CONTINUED)



LAVENDER

Calming for the nerves and a pleasure for the palate. Features lavender from Sequim, Washington.

Tin... 12.⁰⁰ 4 oz ... 13.⁷⁵
8 oz... 24.⁷⁵ 16 oz ... 44.⁵⁵



LEMON CHIFFON

This prize winning rooibos blend has just the right touch of lemon grass and creamy flavor. A long-time favorite.

Tin... 13.⁰⁰ 4 oz ... 13.³⁵
8 oz... 24.⁰³ 16 oz ... 43.²⁵



LICORICE

The sweet flavors of licorice and aniseed combine with the warm of rooibos to create this exceptional blend.

Tin... 13.⁰⁰ 4 oz ... 13.³⁵
8 oz... 24.⁰³ 16 oz ... 43.²⁵



ORANGE CREAMSICLE

Bring back memories of a creamsicle on a hot summer day. Soothing hot and refreshing iced.

Tin... 13.⁰⁰ 4 oz ... 14.⁶³
8 oz... 26.³³ 16 oz ... 47.³⁹



PEPPERMINT

Your senses will awaken with this invigorating bouquet and flavor. Helps cure tummy aches and congestion.

Tin... 14.⁰⁰ 4 oz ... 17.⁰⁰
8 oz... 30.⁶⁰ 16 oz ... 55.⁰⁸



PROVENCE

Rose petals and lavender add a wonderful floral character. Currants, raisins and blueberries add sweetness.

Tin... 15.⁰⁰ 4 oz ... 16.⁸³
8 oz... 30.²⁹ 16 oz ... 54.⁵²



RASPBERRY ROSE HONEYBUSH

Romance is alive with this lovely combination of fruit and flowers.

Tin... 12.⁰⁰ 4 oz ... 12.¹⁶
8 oz... 21.⁸⁸ 16 oz ... 39.³⁸



ROOIBOS

The #1 Ladies Detective Agency's favorite tea. Enjoy the mild, earthy sweetness of this curative drink.

Tin... 12.⁰⁰ 4 oz ... 11.⁴⁴
8 oz... 20.⁵⁹ 16 oz ... 37.⁰⁷



SPICY PLUM

Cinnamon, hibiscus and rosehips combine to create this luxurious tea. Cinnamon and ginger root add the spice!

Tin... 14.⁰⁰ 4 oz ... 11.³⁸
8 oz... 20.⁴⁸ 16 oz ... 36.⁸⁶



STRAWBERRY PEACH

Summer inspired mix of strawberry, peaches and citrus in a green rooibos. Delicious hot or on ice.

Tin... 13.⁰⁰ 4 oz ... 12.³⁸
8 oz... 22.²⁸ 16 oz ... 40.¹⁰



SWEET GINGER COOKIE

Ginger, candied pineapple, mango and papaya, roasted almonds, coconut chips, walnut, peanut and hazelnut.

Tin... 13.⁰⁰ 4 oz ... 11.⁸⁸
8 oz... 21.³⁸ 16 oz ... 38.⁴⁸



VANILLA CREAM

Rich vanilla, paired with the smooth flavor of cream, creates an irresistible tea that is perfect any time of the day.

Tin... 14.⁰⁰ 4 oz ... 11.³⁹
8 oz... 20.⁴⁹ 16 oz ... 36.⁸⁹

INFUSER TEAPOTS AND MUGS

Our infuser teapots come complete with an extra-fine 0.3 mm hole stainless-steel infuser that works for all varieties of tea.

These are designed as a simple and clean way of steeping your tea. The extra-fine tea infuser gives you a perfect, even steep every time. You can steep fine loose-leaf herbals such as Rooibos as well as large whole-leaf teas like Oolong tea.



16 OZ PURPLE BELL
INFUSER TEAPOT

16 OZ INFUSER TEAPOTS - \$30.



CARROT



TEAL



RED



LEAF



MANDARIN



LIME



BLACK



WHITE

15 OZ INFUSER MUGS - \$24.



CARROT



TURQUOISE



RED



MARINE



MANDARIN



LIME



BLACK



WHITE

26 OZ INFUSER TEAPOTS - \$33.



CARROT

TURQUOISE

RED

MARINE

MANDARIN

LIME

BLACK

WHITE

45 OZ INFUSER TEAPOTS - \$42.



CARROT

TURQUOISE

RED

MARINE

MANDARIN

LIME

BLACK

WHITE

15 OZ TRAVEL TEA PRESS - \$30



BLACK

RED

WHITE

LIME

I

INFUSERS AND TEA TIMER

Infusers are essential for steeping exquisite loose teas. Simply place the infuser in your favorite cup or teapot and then add your loose tea and hot water.

Tea timers ensure proper steep times. Queen Mary's timer has three timers built in—3, 4 and 5 minutes. Perfect for white, green and black teas.



PERFECT TEA TIMER
19.

INFUSER WITH LID
15.

INFUSER WITH DISK
15.

TEABREW TEA SACHETS

“Tea is the elixir of life.”

~Lao Tzu

Fill your own tea sachet with your favorite loose tea. These tea sachets are made from 100% natural unbleached paper and are 100% compostable and biodegradable. Made from sustainably harvested American and Canadian wood pulp. Four sizes: 1 cup to 1 gallon.



1 CUP TEAPOT
OR MUG
6.



2-3 CUP
TEAPOT
7.



3-5 CUP
Teapot
8.



4-8 CUPS OR
1 GALLON
(ICED TEA)
9.



ELECTRIC TEA KETTLES

An electric kettle takes all of the hassle out of making a cup of tea. This kettle has a perfectly timed automatic shut off and stays mineral-buildup free.

Electric kettles allow for a faster time to boil fresh water than a microwave and have safety features, such as heat resistant handles and lids that snap in place. Queen Mary tea kettles come in 3 sizes: 17 oz, 37 oz and 57 oz.



RED

57 OZ TEA KETTLE - \$50.



BLACK



WHITE

THE QUEEN'S RULES

IMPORTANT POINTS TO REMEMBER

1. Use the purest water available.
2. Use an infuser that allows tea to properly unfurl for optimum infusion.
3. Always use clean instruments that are dedicated to preparing tea.

37 OZ TEA KETTLE - \$100.



BLACK



RED



LIME



WHITE

17 OZ TEA KETTLE - \$40.



BLACK



RED



LIME



WHITE

AFTERNOON TEA ACCESSORIES.

Afternoon tea is the time for elegant serving accessories. Jane Austen herself would approve of our extensive array of tart and sandwich servers, tea infusers, tea scoops, etc.

All these *accoutrement* are silver plated for that perfect touch of elegance to your table. Queen Mary carries place card holders, ice cube and sugar tongs, iced tea spoons and other wonderful tea time accessories.



SILVER TEAPOT
PLACE CARD HOLDERS
6.

TEASPOONS AND MEASURES



1 POT/1 CUP
MEASURE
11.

3 TO 4 CUPS
MEASURE
9.

1-1/2 TBSP.
MEASURE
5.

1 CUP
MEASURE
5.

ENGRAVED
MEASURE
5.

SILVER PLATED
TEASPOON
4.

GOLD
TEASPOON
6.

KNOW YOUR TEA TIMES

AFTERNOON TEA — An afternoon meal including sandwiches, scones, clotted cream, curd, a few sweets and tea. Also known as “low tea” because guests were seated in low armchairs with low side-tables on which to place their cups and saucers.

HIGH TEA — Often confused with afternoon tea, high tea was an evening meal enjoyed around 6 p.m. by laborers and miners returning home. High tea consists of meat and potatoes as well as other foods and tea. Families with servants often took high tea on Sundays in order to allow the maids and butlers time to go to church and not worry about cooking an evening meal for the family.

SILVER PLATED SERVERS AND SCOOPS

HEART
TART SERVER 13.



SPADE CAKE
TONGS 16.



SQUARE CAKE
TONGS 16.



LEAF
TART SERVER 13.



TEA/SUGAR
SCOOP 16.



TEAPOT/SHELL
SUGAR SCOOP 16.



ROUND TEA/
SUGAR SCOOP 16.



QUEEN MARY HUMMING
BIRD PRINCESS TEAPOT
42.



*“You can never get a cup of tea large enough
or a book long enough to suit me.”*

~C.S. Lewis

SILVER PLATED TEA INFUSERS

SMALL TEA INFUSER
WITH HANDLE 15.



MEDIUM
TEA INFUSER 15.



LARGE
TEA INFUSER 19.



MEDIUM TEA INFUSER
WITH HANDLE 20.



QUEEN MARY HUMMING
BIRD TEACUP AND
SAUCER 23.



AFTERNOON TEA FARE
 Scone mixes (traditional and gluten-free), Devon clotted cream, shortbread cookies, marmalade, jam, salad dressing, honey and special sugars—all the essentials ingredients you need to put on your own elegant afternoon tea event.

TOPPINGS AND DRESSINGS

Honey Mustard Salad dressing (15 oz)	7.00
Orange Pineapple Apricot Marmalade (8 oz)	9.00
Strawberry Jam (8 oz)	8.00
Organic Local Honey (5 oz)	9.00
Devon Clotted Cream (1 oz)	3.00



QUEEN MARY MIXES, DRESSING, HONEY, STRAWBERRY JAM AND ORANGE PINEAPPLE APRICOT MARMALADE

SHORTBREAD COOKIE MIXES - Makes 5 Dozen Cookies



By using brown rather than white sugar, our Brown Sugar Shortbread cookies are a slight departure from traditional shortbread. Delicious!
 7.²⁵



A combination of dark brown sugar and white sugar along with a generous helping of lemon peel help make this shortbread out of this world.
 7.⁵⁰



These are a tasty twist on our Brown Sugar Shortbread cookies. They have the cool, crisp flavor of lemon with the subtle after-burn of ginger.
 7.⁵⁰



Black tea, chai spice and vanilla give this cookie its own unique signature. Elegant and subtly spicy, it commands rave reviews!
 7.⁵⁰

SCONE MIXES - Makes 16 Scones



Each scone is speckled throughout with Heath Almond Brickle Chips for a warm, crunchy flavor.
 10.



A versatile mix that is delicious as is or can be the base for blueberry, cranberry or strawberry scones.
 9.⁵⁰



A gluten free version of our traditional butter scone. Delicious as is or can be the base for your favorite scone.
 10.



These scones have the light, delicate flavor of fresh lemons and can be sugar-glazed for extra sweetness.
 10.



*M*IX YOUR OWN TEA PARTY SUGAR - \$6.
 An excellent way to add color and pizzazz to your afternoon tea table is with colored sugars. These delicious additions can be mixed and matched to coordinate with any theme. For the best results, mix some granulated white sugar in with your color blend. Buy several bags to mix yourself or select from our pre-mixes. Each bag contains 12 ounces.



PINK/RED

RED/WHITE/BLUE



PURPLE/GREEN/BLUE

PURPLE/RED/BLUE



PINK/BLUE

RAINBOW



ORANGE/RED/YELLOW

GREEN/YELLOW/BLUE



TINY TEAPOT JEWELRY

You will love these tiny teapot charms. Wear them singly on a necklace or in multitudes on your own charm bracelet.

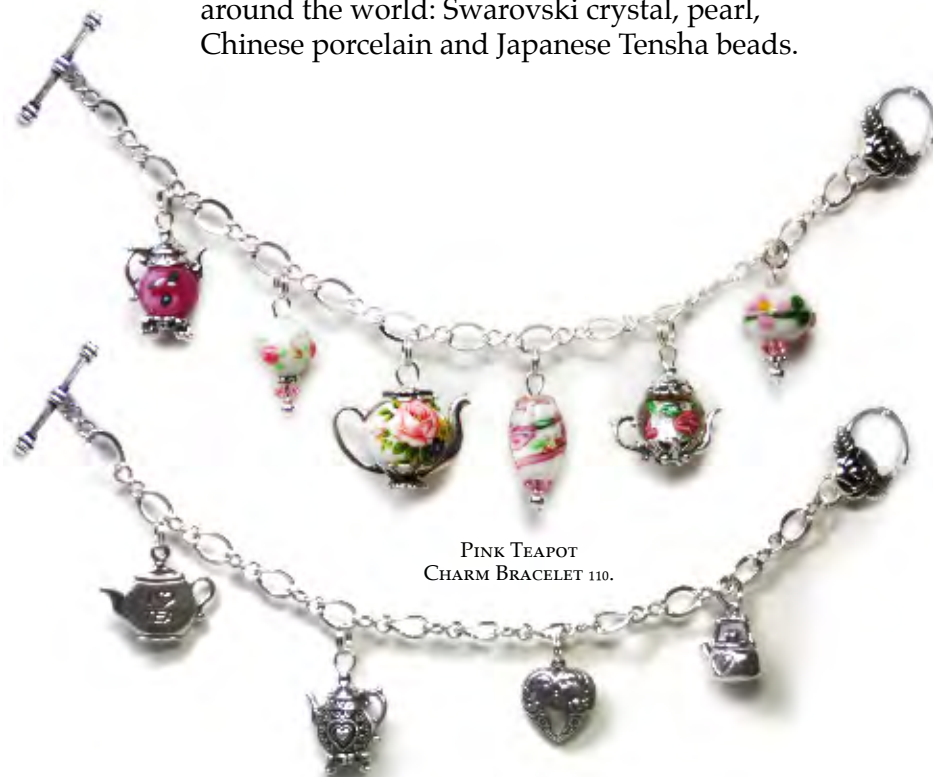
These sterling silver charms are all hand crafted and embellished with beads from around the world: Swarovski crystal, pearl, Chinese porcelain and Japanese Tensha beads.

THE TEA PARTY

*I had a little tea party
This afternoon at three.
'Twas very small-
Three guest in all-
Just I, myself and me.*

*Myself ate all the sandwiches,
While I drank up the tea;
'Twas also I who ate the pie
And passed the cake to me.*

~Jessica Nelson North



PINK TEAPOT
CHARM BRACELET 110.

SILVER TEAPOT
CHARM BRACELET 120.

TINY TEAPOT CHARMS



10MM AURORA AUSTRIAN
SWAROVSKI CRYSTAL
STERLING SILVER 24.



10MM PEARL AUSTRIAN
SWAROVSKI CRYSTAL
STERLING SILVER 24.



10MM JAPANESE
TENSHA BEAD
STERLING SILVER 24.



10MM BLUE AUSTRIAN
SWAROVSKI CRYSTAL
STERLING SILVER 24.



10MM PINK AUSTRIAN
SWAROVSKI CRYSTAL
STERLING SILVER 24.



10MM PURPLE AUSTRIAN
SWAROVSKI CRYSTAL
STERLING SILVER 24.



10MM AURORA AUSTRIAN
SWAROVSKI CRYSTAL
GOLD PLATED 26.



10MM SILVER HEART
SOLID STERLING
SILVER 26.



12MM PEARL AUSTRIAN
SWAROVSKI CRYSTAL
STERLING SILVER 26.



12MM AURORA AUSTRIAN
SWAROVSKI CRYSTAL
STERLING SILVER 26.



12MM JAPANESE
TENSHA BEAD
STERLING SILVER 26.



12MM GREEN AUSTRIAN
SWAROVSKI CRYSTAL
STERLING SILVER 26.



16MM JAPANESE
TENSHA BEAD
STERLING SILVER 28.



16MM BLUE CHINESE
PORCELAIN BEAD
STERLING SILVER 28.



PURPLE TEAPOT
CHARM BRACELET 150.

REVERSIBLE APRONS

Every hostess will love our perfectly styled aprons. Queen Mary's reversible halter aprons have been lovingly designed to flatter your figure and provide full coverage.

All halters are fully reversible, feature side or front pockets and are made of 100% fine quilters cotton. Machine wash cool, tumble dry on gentle cycle. Warm iron as needed. These aprons are proudly made in sunny Southern California!

*Aprons fit women's dress sizes 4 – 12.
Children and plus sizes available in some patterns.*



NATURA APRON FRONT



NATURA APRON REVERSE

REVERSIBLE APRONS - \$84.



CUPCAKE CUTIE



FRENCHIE



GARDEN PARTY BLACK



GARDEN PARTY LIME



GLORY BLACK & WHITE



GLORY RED & WHITE



GYPSY BANDANA ORANGE



GYPSY BANDANA PINK



GYPSY BANDANA RED



IRONWORK



LAVENDER MILK



LET'S BAKE



MIMI



MINNI



SWEET CHERRY



TERI

BERMUDA BLUES

Alice in Wonderland

ALICE IN WONDERLAND

Share your love of Wonderland with a full array of Alice-themed teapots, tea cups and afternoon tea accessories. Perfect for Alice in Wonderland lovers of any age.



40 oz LARGE TEAPOT
70.



18 oz SMALL TEAPOT
35.



11 oz. SUGAR AND
CREAMER SET
42.



SALT AND PEPPER SHAKERS
30.



SET OF TWO 8 oz. CUPS
AND SAUCERS
40.



12 oz. MUG WITH BOX
24.



TEABAG/INFUSER REST
10.



14 oz. TALL MUG
15.



CHILDREN'S TEA SET
50.



SET OF FIVE 3 oz. TEACUPS
AND SAUCERS WITH BOX
51.



6" TRIVET
18.



11.5" x 6.5"
SERVING TRAY
35.



ALICE IN WONDERLAND
ROOIBOS TIN
14.



CAKE STAND
85.



2 TIER CAKE STAND
85.

FAIRY PRINCESS TEA PARTY - \$215.
This fairy princess children's tea party set for six provides an instant tea party in a box. It provides all the makings for the perfect party that will leave a lasting impression on all. Children will love it and parents will have all they need without the fuss. The box includes:

- Pink Feather Tiaras (6)
- Pink Feather Wands (6)
- Pink Head Wreaths (6)
- Pink Fairy Wings (6)
- Pink Tutus (6)
- Fairy Princess Necklaces (6)
- Pink Crown Sparkle Rings (6)
- Fairy Princess Sticker Book (6)
- Heart 3 ounce Teacup and Saucer Set (6)
- White Infuser Teapot (1)
- Fairy Princess Rooibos Tea (1)
- Pink Sugar (1)





BECOME A TEA QUEEN

Queen Mary Tea is synonymous with tea parties in the hearts and minds of long time fans. And now you can host your own tea party and share the experience so many have come to love.

HOW DO I EARN MONEY?

Tea Queens receive 30% gross profit from tea, teapot, tea accessories and gift sales. When you sell Queen Mary products at full retail value, you earn a 30% gross profit. This allows you to see an immediate return on your investment. Hostesses who work with Tea Queens receive rewards—free tea and 50% off gifts—depending on the sales.

HOW DO I SELL QUEEN MARY TEA PRODUCTS?

Selling tea, teapots, tea accessories and gifts by Queen Mary Tea is a business opportunity so flexible that you get to determine the path to your own success. Whether looking to earn some extra money or build a career, joining the Queen Mary Tea family as a tea party hostess allows you to develop a home tea business that suits your individual lifestyle.

Our Tea Queens sell tea, teapots, tea accessories and gifts at home tea parties, catalog parties and through fund-raisers, as well as by sponsoring others to share Queen Mary Tea. Queen Mary Tea is an opportunity as flexible as your life!

HOW DO I GET STARTED?

You can purchase a starter tea party kit for \$99 plus tax and shipping. The starter kit includes \$150 (retail value) of sample products plus presentation materials, catalogs, invitations and order forms to get you up and running immediately.

Call 206-466-1173 or
email tea_parties@queenmarytea.com.

TEA PARTY THEME KITS

QUEEN MARY TEA PARTY STARTER PACK

\$150 VALUE: YOUR COST - \$99

Looking for a simple way to get started with a set of proven products? Try the Queen Mary Tea Starter Kit which includes Queen Mary branded products including the following, as well as the necessary catalogs, order forms, blank business cards, invitations and thank you notes you will need to get started.

- Queen Mary Tea Cup and Saucer
- Perfect Tea Timer
- Silver Strainer
- Queen Mary Tea Drip Catcher
- Queen Mary English Breakfast Tea Tin
- Queen's Jubilee Earl Grey Tin
- Strawberry Peach Rooibos Tin
- Lemon Chiffon Tin
- Queen Mary Tea Sugar Pink
- Queen Mary Tea Sugar Purple
- Selection of Queen Mary Tea Greeting Cards

ALICE IN WONDERLAND TEA PARTY

\$350 VALUE: YOUR COST - \$245

The Alice in Wonderland Tea Party kit includes a beautiful selection of Alice in Wonderland tea set accessories including the following, as well as the necessary catalogs, order forms, blank business cards, invitations and thank you notes you will need to get started.

- Alice Teapot
- Alice Tea Party Set
- Alice 8" Salad Plate (4)
- Alice Serving Tray
- Alice Salt and Pepper
- Alice Tea Bag Rest
- Alice Creamer
- Alice Sugar Bowl
- Alice Round Cup and Saucer Set (2)
- Alice Note Cards
- Royal Rose Black Tea
- Alice's Wonderland Rooibos Tea
- Selection of Alice in Wonderland Cards (4)

QUEEN MARY CLASSIC TEA PARTY

\$500 VALUE: YOUR COST - \$350

The Queen Mary Classic Tea Party kit includes Queen Mary branded products including the following, as well as the necessary catalogs, order forms, blank business cards, invitations and thank you notes you will need to get started.

- Queen Mary Teapot
- Queen Mary Tea Cup And Saucer Rose
- Queen Mary Tea Cup And Saucer Violet
- Queen Mary Tea Drip Catcher
- Queen Mary Tea Spoon
- Queen Mary English Breakfast Tea Tin
- Queen's Earl Grey Tin
- Strawberry Peach Rooibos Tin
- Lemon Chiffon Rooibos Tin
- Perfect Tea Timer
- Silver Strainer
- "Queen" Rhinestone Tiara
- Reversible Apron
- Bodum Tea Kettle 34 Oz White
- Queen Mary Tea Sugar Pink
- Queen Mary Tea Sugar Purple
- Tiny Teapot Necklace (Swarovski Crystal)
- Tiny Teapot Necklace (Pink Bead)
- Selection of Queen Mary Tea Greeting Cards
- Queen Mary Tea Book

PREPARING FOR YOUR PARTY

We also have party preparation tools to ensure that our Tea Queens have what they need to put on the best tea party ever. Pick and choose from the following tea wares to round out your own tea party essentials. Consultants and Hostesses receive a 20% discount off Queen Mary retail rates for tea preparation and food products.



FUND RAISING WITH THE QUEEN

Share the Queen Mary Tea experience and raise money for your favorite charity at the same time.

Putting on a Queen Mary tea party is easy. Order a themed kit which comes complete with tea, teapot, teacups, scone and cookie mixes, as well as party ideas and recipes to make your party memorable. You simply invite friends and colleagues who can peruse all things tea from samples in your themed kit as well as the Queen Mary Tea catalog.







QUEEN
Mary

SEATTLE, WA 98105 • (206) 466-1173
WWW.QUEENMARYTEA.COM

